

# ROAD CLEARANCE TECHNOLOGY

POWER PACKS, CRANES AND FLAILS FOR PROFESSIONAL USE

*Issue 1, 2016*



# INADEQUATE ROAD MAINTENANCE IS A ROAD SAFETY HAZARD



**Untrimmed ditches and verges mean impaired visibility and increased accident risks for motorists.** We know there is a clear link between roadside maintenance and road safety. Slagkraft has everything you need to blaze a trail for road safety.





## CONTENTS

---

### ADVANTAGES

Slagkraft road clearance systems 2–5

Which solution is best for you? 6–7

Power pack performance 8–15

### TECHNICAL SPECIFICATIONS

Flails 8

Power packs 14

Cranes 15

# THINK WIDER



We build road clearance machines for the people who make our roads safer. By designing all the parts from the power pack to the cutting head, we deliver solutions to suit your construction machinery and the jobs you have to do. We also guarantee high quality in every component. It pays to think wider.

Simple, robust designs. Few service points. World-class operating characteristics.



**SLAGKRAFT – FOR BETTER ROAD SAFETY  
AND A MORE OPEN LANDSCAPE**



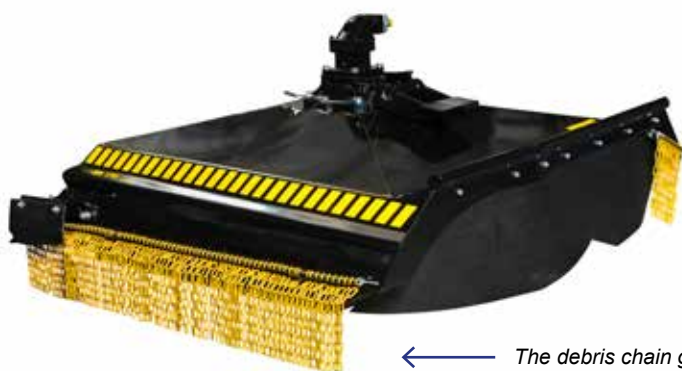
# WHICH SOLUTION IS BEST FOR YOU?

**SLAGKRAFT PROVIDES A CHOICE OF DIESEL POWER PACKS, CRANES WITH A REACH OF 5 TO 11 METERS AND FLAILS FOR BRUSH OR GRASS CLEARANCE.**

You choose the products you need to suit the job you have to do. We deliver modular solutions customized for professional use. Our systems are flexible and functional. Check the tables below to see which parts are compatible. If you need more help, contact us directly for personal service.

## FLAILS

Our high-performance flails are designed with safety in mind. The SH series models are easy to maintain. They can be combined with Slagkraft's cutting head or installed on other types of carrier machines. Read more about our different flails on page 8.



← The debris chain guard is an example of how flails are equipped with safety in mind.

## CRANES

Our cranes are manufactured to meet high quality and reliability standards. With technical solutions such as four-point linkage and twin slew systems, they are built to meet the reliability necessary for professional use. Technical data about our cranes can be found on page 15.



## SELECT POWER PACKS, CRANES AND FLAILS THAT SUIT YOUR NEEDS BEST

Slagkraft is Scandinavia's leading supplier of road clearance machines. We manufacture all the parts necessary for effective road clearance work – power packs, flails, cranes and cutting heads for brush and grass clearance. Slagkraft equipment has many possible combinations to suit different types of carrier machine. We have the highly efficient brush clearance equipment you're looking for.

### HOW DO YOU CHOOSE THE RIGHT PARTS?

When ordering a power pack, it's easiest to base your choice on three criteria: the reach you want to achieve and the type of vegetation you will be working with – for example, if you aim to clear up to seven metres, choose the smaller power pack even if you have a large wheel loader – while the choice of cutting head depends primarily on whether you will be clearing brush or grass. Reach is a factor to consider in the same way as with the power pack.

1

### SELECT POWER PACK

Vehicle	Power Pack Craft W10	Craft W17	Craft G17
Wheel loader 10 t–13 t	X		
Wheel loader 13 t–18 t >185	X	X	
Grader, underslung	X	X	
Grader, side mounted			X



**SLAGKRAFT ROAD CLEARANCE SYSTEMS** No matter which solution you choose, our product systems are built with you – the operator – in mind.. The location of the cutting head means great workplace visibility; the entire machine is manoeuvred smoothly by joystick, and there's a door microswitch to ensure operator safety. These are just a few examples of how we create products for operators who demand reliable, easily manoeuvred road clearance technology.

### POWER PACKS

Slagkraft provides cutting heads that are simply and robustly built. Power packs can be equipped with different flails and cranes. When selecting a power pack, start from the weight of the carrier machine and the reach you work at. For more detailed descriptions of Craft W10 and Craft W17 power packs, see pages 10–14.



**ALWAYS TALK TO US OR YOUR DEALER BEFORE SELECTING A SOLUTION.**  
**YOU CAN FIND YOUR NEAREST DEALER AT [WWW.SLAGKRAFT.SE](http://WWW.SLAGKRAFT.SE)**

2

### SELECT CRANE

	<b>Cranes</b>				
	SC 40	SC 45	SC 70	SC 85	SC 160
Power packs					
Craft W10	X	X	X		
Craft W17	X	X	X	X	
Craft G17					X

3

### SELECT FLAIL

	<b>Flails</b>							
	SH 125	SH 150	SH 170	SH 190	SH 210	V130	V 160	V 190
Cranes								
SC 40	X	X				X		
SC 45	X	X				X	X	
SC 70	X	X	X			X	X	
SC 85	X	X	X	X	X	X	X	X
SC 160	X	X	X	X	X	X	X	X

## SH FLAILS

MODEL	SH125-60	SH150-80	SH170-90	SH190-110	SH210-125
Working width (mm)	1250	1500	1700	1900	2100
Weight (kg)	525	580	665	750	780
Hydraulic motor (cc)	60	80	90	110	125
Hydraulic oil pressure	Min 210 bar / Max 380 bar				
Hydraulic oil flow					
Min (l/min)	100	100	100	100	120
Ideal (l/min)	120	130	130	130	145
Max (l/min)	140	150	160	160	170

## TW FLAILS

MODEL	SH110-40-TW-90°	SH150-60-TW	SH150-60-TW-90°	SH150-80-TW	SH150-80-TW-90°
Working width (mm)	1100	1500	1500	1500	1500
Weight (kg)	455	530	530	540	540
Hydraulic motor (cc)	40	60	60	80	80
Hydraulic oil pressure	Min 210 bar / Max 380 bar				
Hydraulic oil flow					
Min (l/min)	70	80	80	100	100
Ideal (l/min)	85	95	95	130	130
Max (l/min)	100	110	110	150	150

## V FLAILS

MODEL	V130	V160	V190
Working width (mm)	1310	1598	1886
Weight (kg)	500	555	620
Hydraulic motor	F12-40		
Hydraulic oil pressure	Min 210 / Max 380 bar		
Hydraulic oil flow (l/m)	Min 100 - Ideal 130 - Max 150		
Power requirement (kW)	45		

## SLAGKRAFT FLAILS



**SH** The SH model is used for clearing alongside roads together with our power packs and cranes.



**TW** The TW Off-road flail model is used e.g. on excavators or backhoe loaders. It is intended for clearance work in terrain, power-line corridors, etc.



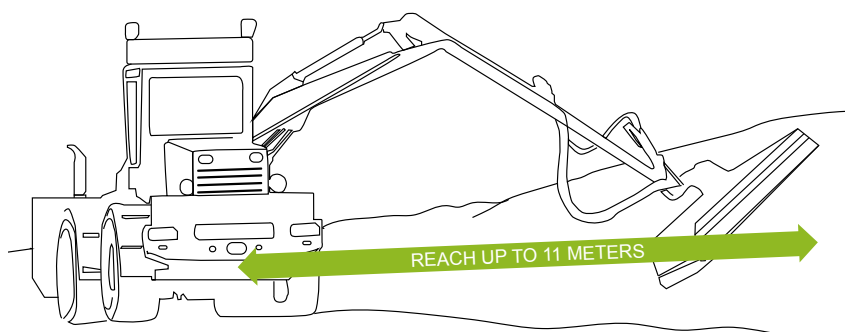
**V** The V model is best suited for clearing grass.

## SLAGKRAFT CRANES

- SC40** Reach with SH125 flail 5360 mm
- SC45** Reach with SH150 flail 6343 mm
- SC70** Reach with SH170 flail 7370 mm
- SC85** Reach with SH210 flail 8495 mm
- SC160** Reach with SH210 flail 11075 mm

The reach of Slagkraft cranes is calculated from the centre of the crane pillar to the outermost cutting link.

YOU SELECT THE CRANE THAT SUITS YOU AND YOUR WORK BEST





# BLAZE A TRAIL WITH SLAGKRAFT

More than 40 years' experience has made Slagkraft one of Scandinavia's leading suppliers of professional road clearance machines. We provide high performance, good running characteristics and simple maintenance.

Our systems are environmentally friendly, user friendly and have world-class operating characteristics. Slagkraft's grass and bush cutting units mean wider verges, embankments and headlands.

Blaze a trail for safer roads – with Slagkraft.

EXPORT

**10+**  
COUNTRIES

*Today, we export  
products worldwide.*

MORE THAN

**40** YEARS'  
EXPERIENCE

*Our products are characterised by  
safety, quality and eco-friendliness.*

## SLAGKRAFT DATA

**Established:** 1975  
**Sales (Cranab & Slagkraft):** SEK 250 million  
**Number of employees (Cranab & Slagkraft):** 140  
**Exports:** 10 countries  
**Head office:** Vindeln, Västerbotten



## CRAFT W17

**Design.** The power pack is designed with ease of service in mind.. For example, it is equipped with improved work lighting to make night work easier for the operator.

### CRAFT W17 – HIGH PERFORMANCE POWER PACK

Craft W17 is a power pack from Slagkraft that meets requirements for high capacity and reliability. The power pack is manufactured with operator comfort in mind. The operator is able to adjust settings (such as crane settings) and a touch-screen control panel makes at-a-glance operations easy. The engine is also adapted to meet environmental standards and to satisfy the reliability and productivity requirements of users.



## SLAGKRAFT POWER PACKS

**CRAFT W10** has a 4-cylinder engine. The cutting head can be equipped with different flails and cranes with a reach up to 7.3 meters.

**CRAFT W17** is fitted with an engine that meets stage 4 interim emission standards. Cranes with a reach of up to 8.5 meters and all Slagkraft flail models can be selected for use with the W17 power pack.

**CRAFT G17** has a 129 kW 4-cylinder engine. The cutting head is intended for installation with an 11 meter crane using a grader as the carrier machine.



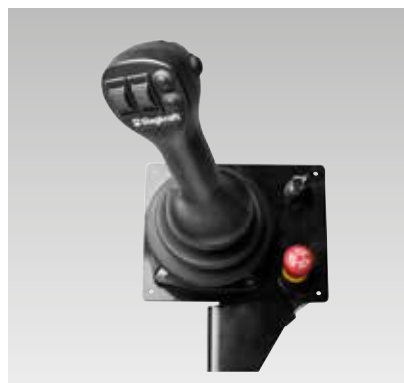
**Cat motor.** The Craft W17 engine meets stage 4 interim emission standards and stricter requirements regarding the environment, reliability and productivity.



**The electrical system** uses Deutsch connectors, electronic fuses and relays to ensure good connectivity in the electrical system.



**Control panel display** The control panel display now has more functions and provides the operator with more information, enables better power pack supervision and allows the operator to make individual adjustments to crane functions.



**Control system.** The power pack has a new type of joystick that provides improved operational reliability.



**Stainless steel hydraulic tank** Improved cleanliness means greater hydraulic system operational reliability. The tank is equipped with a drain valve to make oil change easier.



**Diesel tank** The tank with its larger, 200-litre volume means longer operating time between refuels.



## CRAFT W10 – A POWER PACK FOR SMALLER ROAD NETWORKS

Craft W10 is a Slagkraft product intended primarily for use on smaller road networks where flexibility and productivity are a necessity.

## CRAFT W10

**Design.** The power pack is engineered and designed based on operational reliability and service friendliness. The high quality components in the W10 are selected on this basis.



**Craft W10 combinations.** Craft W10 can be combined with crane models SC40, SC45 and SC70. Flails used with this power pack have a working width of up to 1.7 meters.

## MUSCLE POWER SLAGKRAFT W10



**Joystick.** The machine's crane and flail are controlled by a joystick. This makes it easier for the operator, who keeps one hand on the steering wheel and manoeuvres the machine with the other hand. The starter switch and emergency stop are both installed next to the joystick. A driver's cab door switch is fitted for greater safety.



**Hydraulics** Hydraulic system components are selected with due consideration for operational reliability, accessibility during service and driver comfort. All crane functions can be operated proportionally and simultaneously. Our power packs are built with accessibility for service and maintenance in mind.



**Display.** The control panel display monitors engine and hydraulic functions. It allows the operator to make individual settings for crane speed, engine operating rpm and so forth. Because control panel display location is flexible, it can be installed anywhere in the driver's cab.



**Engine** The Craft W10 is fitted with a CAT engine that meets stage 4 interim emission standards to meet stricter requirements regarding the environment, reliability and productivity.



**Radiator.** The Craft W10 has side-by-side radiators. This makes cleaning and servicing easier.

## ACCESSORIES POWER PACKS



**Levelling cylinder kit.** This allows the flail to be carried level, which is an advantage when operating in stony conditions.



**Lighting kits.** There is a choice of LED or halogen lighting. The lighting is installed on the crane.



**Tilt attachments.** There are various types of attachments for use between the crane and the flail. Other types of attachment are also available for e.g. excavators and backhoe loaders.

# TECHNICAL DATA CRAFT W10 AND CRAFT W17

MODEL		CRAFT W10	CRAFT W17
Diesel engine	Manufacturer	CAT	CAT
	Model	C4.4	C4.4
	Satisfies exhaust emissions requirements	3B / Stage 4 interim	3B / Stage 4 interim
	Cylinders	4	4
	Total displacement (litres)	4.4	4.4
	Injection system	Electronic	Electronic
	Intake system	Turbocharger with intercooler	Twin turbocharger with intercooler
	Max output (kW / hp / rpm)	74.5 / 100 / 2200	129 / 175 / 2200
	Max torque (Nm/rpm)	450 / 1400	750 / 1400
Hydraulic system	Pump, flail	Rexroth A20	Rexroth A11VO75
	Max pressure (bar)	285	350
	Filter	10 µm absolute	10 µm absolute
	Boom pump	Rexroth A20	Sauer-Danfoss Series 45 / 74cc
	Max pressure (bar)	250	250
	Control valve	Parker P70LS	Parker L90LS
Electrical system	Voltage	24V DC	24V DC
	Battery capacity	2x60Ah	2x60Ah
	Alternator	70A	70A
Control system	Control units	Parker IQAN	Parker IQAN
	Joystick	5 pin	5 pin
	Warnings	Oil pressure, temperature, charge, low hydraulic oil level, high hydraulic oil temperature	Oil pressure, temperature, charge, low hydraulic oil level, high hydraulic oil temperature
	Starting and stopping the flail	Proportional with ramp function	Proportional with ramp function
	Throttle control	Electric	Electric
Weight and volume	Weight (kg)	1650	1700
	Diesel tank (litres)	150	200
	Hydraulic oil tank (litres)	160	160
	Hydraulic system (litres)	200	200

## CRAFT W10

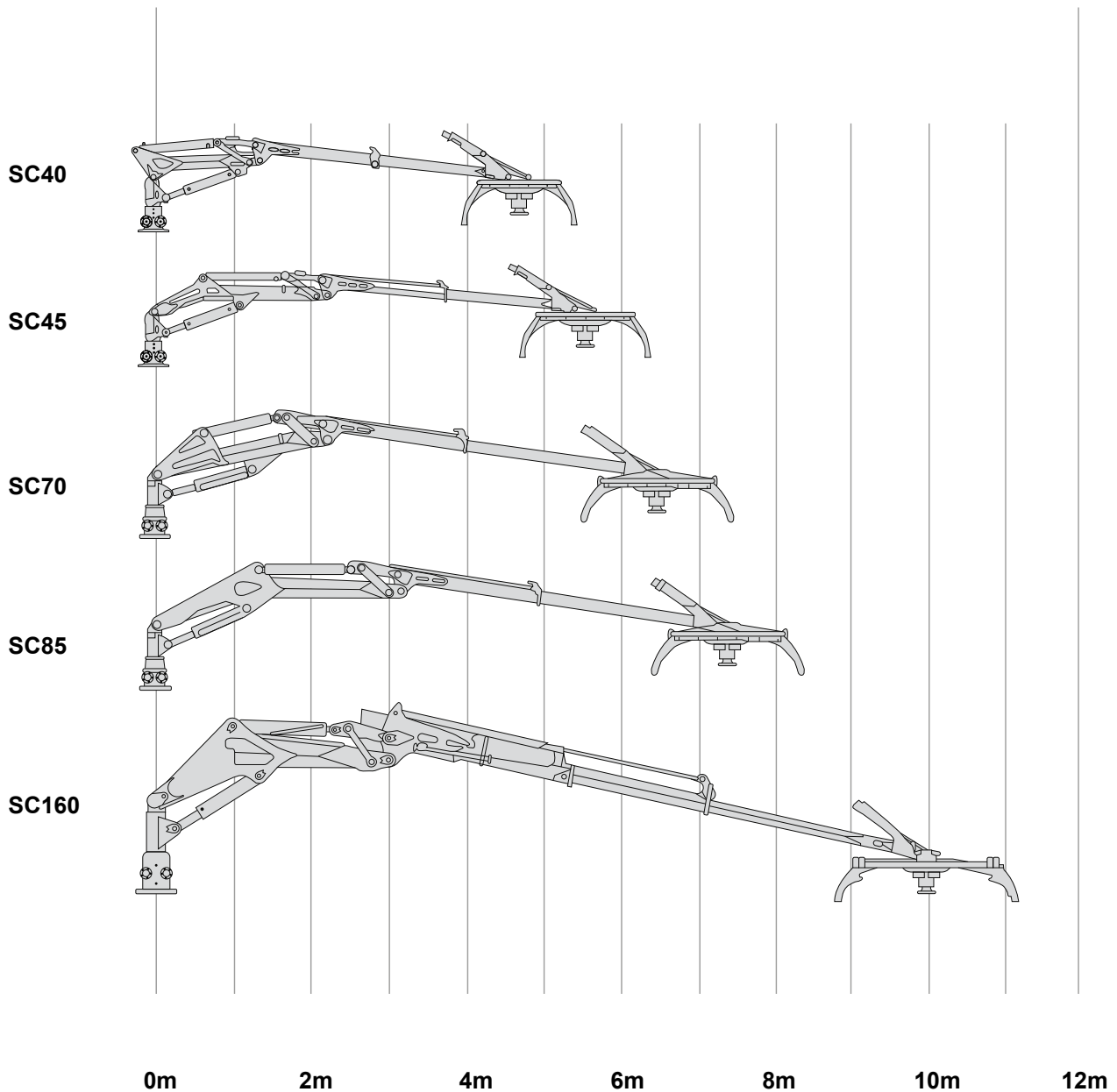


## CRAFT W17



# TECHNICAL DATA CRANES

CRANE MODEL	SC40	SC45	SC70	SC85	SC160
Reach, slewing motor centre – outermost link	5360 (SH125)	6343 (SH150)	7370 (SH170)	8495 (SH210)	11075 (SH210)
Slew system	Twin rack slewing motor				
Slew angle	210°	210° or 380°	220° or 360°	220° or 360°	200°
Boom extension (telescope) (mm)	1250	1250	1500	1500	6000
Recommended flow (l/min)	30-60	60-80	60-110	60-110	130-200
Working pressure (bar)	160	190	230	230	235
Weight including oil (kg)	665	740	1260	1310	2500





## EXPERIENCE. TECHNOLOGY. INNOVATION.

Cranab's factories are located in Vindeln, deep in the forests of West Bothnia. Here we develop and manufacture world-class cranes, grapples and land clearing machines. We are driven by a genuine passion for forestry and road clearance technology. We are also driven by our unyielding goal to constantly push technology development forwards. Although we are based in northern Sweden we reach out to the whole world to be close to the customer we develop products for. We listen carefully to their requirements and draw on more than 50 years of experience and solid technological expertise to develop innovative products.

Experience, technological expertise and an unswerving determination to improve. This is a somewhat ingenious combination if you ask us.

Cranab Slagkraft is part of the CRANAB GROUP, which also includes Vimek and Bracke Forest. Today, the companies are world-leaders in their respective fields. Our common success factors are the development, manufacture and marketing of the best technical solutions for forestry and road clearance work.



Cranab AB  
SE-922 82 Vindeln, Sweden. Tel: +46 933 135 00  
info@slagkraft.se [www.slagkraft.se](http://www.slagkraft.se)

