

# FUTURE TECHNOLOGY FOR ROAD CLEARANCE

NEW POWER PACK W180 AND CRANE SC8. EQUIPMENT FOR PROFESSIONAL USE

*Issue 2, 2020*



SLAGKRAFT – FOR SAFE  
TRAFFIC AND A MORE OPEN  
LANDSCAPE.



# NEW GENERATION POWER PACK AND CRANE

With the introduction of the new developed Power pack W180 that meets the emission regulations for EU Stage V, and the new crane SC8 based on Cranabs technology for forwarder cranes, Slagkraft is launching the next generation system for efficient roadside clearance.

The new Power pack together with the crane optimize the machine which gives better driving performance than ever, providing class leading visibility and stability.

## W180

**Design.** The Power pack W180 is designed to provide performance, reliability and serviceability. High quality components are used and placed gathered, protected and easy to access.

The heart of W180 is a new diesel-powered Caterpillar C4.4 engine providing 175 hp. The new engine meets the emission requirements, is leaner to the environment, has lower fuel consumption and deliver improved performance compared to previous models



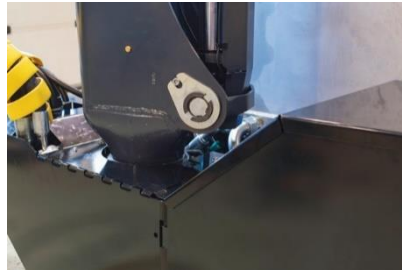
## SC8

**New crane.** The new SC8 crane is based on the same design as the popular forwarder Cranes from Cranab, providing high performance and reliability. Hydraulic lines, cylinders and sensitive components are well protected. The optimal geometry ensures smooth operation adopted for Slagkraft Power packs and mowers

## NEWS AND UPGRADES



**Engine.** W180 is powered by a new Caterpillar C4.4 diesel engine providing 175 hp. The engine meets the EU Stage V emission regulations.



**Crane mounting.** The base of the crane is attached to the machine frame at a low position providing good visibility and centre of gravity.



**Oil cooler.** Mounted at the attachment frame with the fans inside which gives optimized cooling and protection.



**Main valve.** The valve block is placed close to the base of the crane well protected and easy to access for service.



**Batteries.** W180 is equipped with a package of twin batteries. The package is mounted on a sliding shelf for easy access.



Battery access for service and maintenance well covered by a hood and front hatch.



**Electric central.** Located behind a protection hatch at the front of the Power pack. All components easy to access.



**Tanks.** The fuel tanks of the Power pack have a new panel that is easy to access when refuelling diesel and DEF. Panel is protected by a lockable hood.



**Fuel tanks.** Tank volumes, 200 litres for diesel and 15 litres for DEF.



**Lights.** Three light areas, on the outer boom, lift cylinder and at the Power pack.



**Lights.** One LED-light is located on the cover for the lift cylinder of the crane.

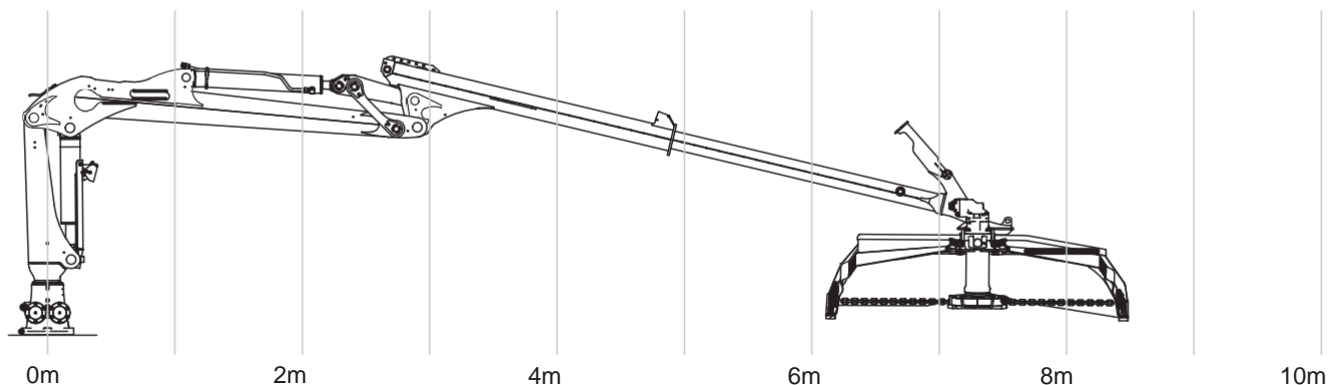


**Lights.** To give best working light, double LED-lights are mounted under the outer boom. All lights on the crane are well protected and cover the whole working area.



## TECHICAL DATA SC8

CRANE MODEL		SC8
Reach, slewing motor centre – outermost link,		8450 mm (SH210)
Slew system		Twin gear rack slew motor
Slew angle		370°
Boom extension (telescope) (mm)		1700
Recommended flow (l/min)		60-120
Working pressure (bar)		230-250
Weight including oil (kg)		1250



## TECHICAL DATA W180

MODEL		W180
Diesel engine	Manufacturer / Model	CAT C4.4
	Fulfil exhaust emission level regulation	EU Steg V
	Cylinders / Displacement (litre)	4 / 4,4
	Injection system	Electronic
	Fuel intake system	Twin turbocharger with CAC (Charge air cooler)
	Max power (kW / hp / rpm)	129,4 / 176 / 2200
	Max torque (Nm / rpm)	750 / 1400
Hydraulic system	Pump mower	Rexroth A11VO75
	Max pressure (bar)	350
	Filter	10 µm absolute
	Crane pump	Sauer-Danfoss Serie 45 / 74cc
	Max pressure (bar)	250
	Main valve	Parker L90LS
Electric system	Voltage / Battery capacity	24V DC / 2x60Ah
	Alternator	85A
Control system	Control units/ Joysticks	Parker IQAN / 5-prop
	Alarm functions	Oil pressure, engine temperature, charging, engine function, exhaust cleaning hydraulic oil level, hydraulic oil temperature, fuel level
	Start – stop of mower	Proportional with ramp function
	Throttle control	Electric
Weight and volume	Weight (kg)	1700
	Diesel tank (litres) / DEF-tank (litres)	200 / 15
	Hydraulic oil tank (litres) / Hydraulic system (litres)	130 / 170